

Air Intake Filter Specification Template

FOR PRICING SEND TO:

EMAIL: ascquoterequest@gmail.com or FAX: 513-860-9785

Chillers with Horizontal Coils (Liebert, Chandler, Bohn, etc.)

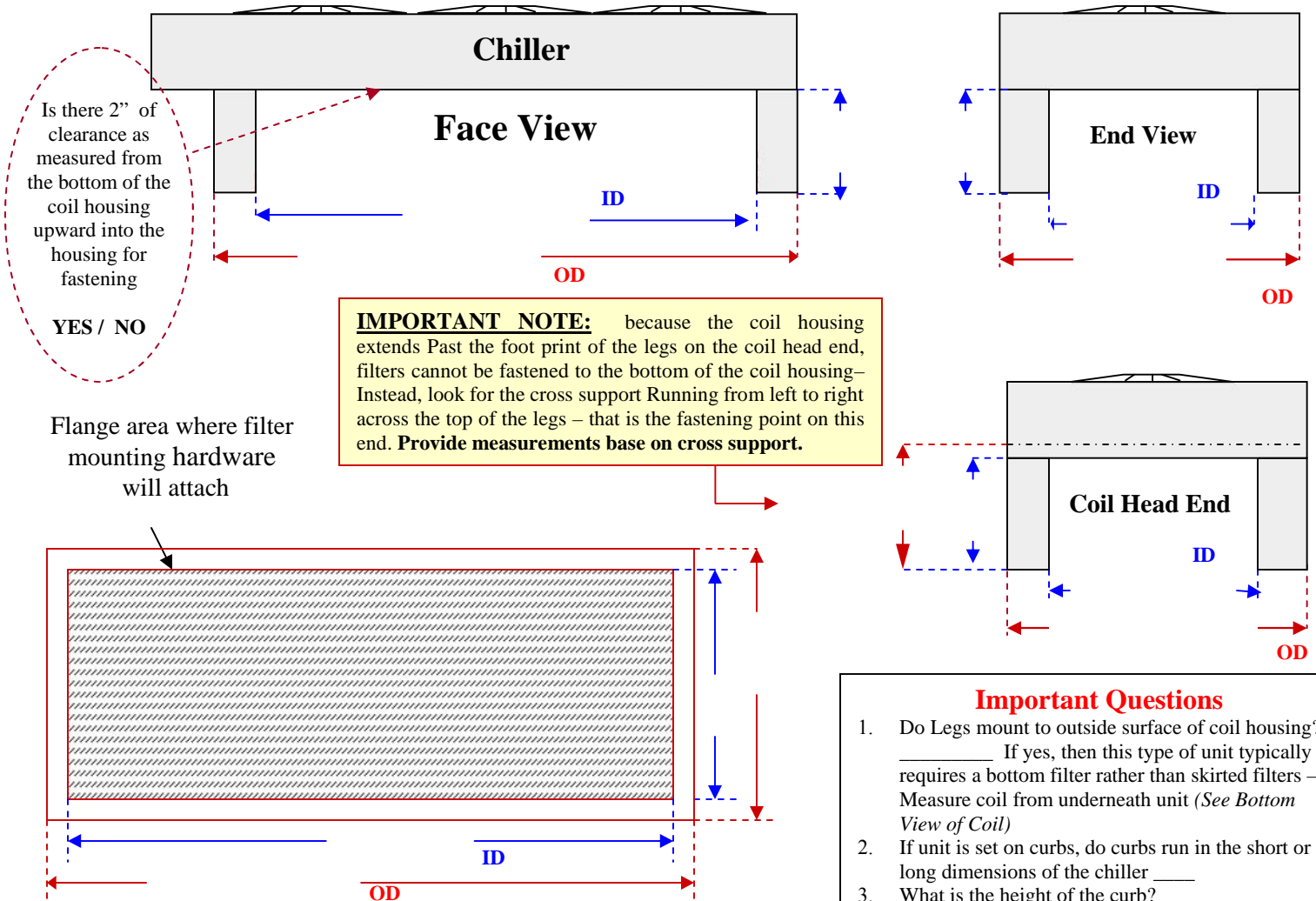
Company Name: _____ **Tel.** _____ **Fax** _____

Business Address: _____ **eMail Address** _____

Contact: _____ **End Customer Company Name** _____

Equip. Make / Model: _____ **Number of Units of this Model** _____

NOTE: With this type of chiller, you have two options 1- skirt the legs with filtration or 2 – cover the bottom coil. By skirting the legs with filtration you move the debris capture point to a location of easy visibility and accessibility for cleaning – although this approach generally costs more than covering the coil with a single filter, the cost differential is quickly paid back by reducing the number of cleanings and maintenance effort. Regardless of your approach, both will provide excellent filtration performance.



This template is copyright by Air Solution Company & Newway Company. This template is to only be used for capturing specifications which will be sent to Air Solution Company & Newway Company for purposes of price quotes and production. It may not be sent to any other third party manufacturer for any purpose including price quotation and product replication without written permission of Air Solution Company or Newway Company.

- Important Questions**

 1. Do Legs mount to outside surface of coil housing? _____ If yes, then this type of unit typically requires a bottom filter rather than skirted filters – Measure coil from underneath unit (*See Bottom View of Coil*)
 2. If unit is set on curbs, do curbs run in the short or long dimensions of the chiller _____
 3. What is the height of the curb?
 4. If unit is on raised structural steel, is it open beneath the steel rail? Y N
 5. What is distance from roof / pad to bottom of steel rail
 6. What is distance from roof / pad to top of steel rail